

Low Profile Industrial Scales



**NTEP Approved
Class III/IIIL**

Our platforms have applications in weight counting, meat process, air cargo, shipping/receiving, process control and miscellaneous checkweighing just to name a few. Loading accomplished via hand truck, forklift and/or overhead crane.

Available in capacities:

2,000 lbs. to 30,000 lbs.

Standard Sizes:

2' x 2' up to 8' x 10'

420 E. Lincoln Street
Findlay, OH 45840

Phone: 1-800-637-3326

Fax: 419-422-9036

Website: loadmasterscale.com

Email: loadmaster@loadmasterscale.com

The Loadmaster Series "LP" is a low profile, full frame electronic industrial scale. (not a foot scale)

These platforms have applications in weigh counting, meat processing, air cargo, shipping/receiving, process control and miscellaneous checkweighing just to name a few. Loading accomplished via hand truck, forklift and/or overhead crane.

Ruggedly designed to take the abuse found in so many industrial applications. Standard deck is 5/16" checkered plate for light capacity and 3/8" checkered plate for high capacity (smooth deck standard for stainless steel models). Each scale is painted with a high quality zinc chromate primer and finished coated with a durable enamel.

- Optional:
1. Hot dip galvanized
 2. Epoxy paint
 3. Stainless construction

Installation is in most cases as simple as setting in place and using. Mounting holes are provided if a more permanent installation is desired.

- Optional:
- 1: Drive on ramps, 1 to 4 sides.
 - 2: Forklift channels for maximum portability.
 - 3: Self-contained "ready to pour" pit frame.
 - 4: Bumper guards to stop your forklift from running into the scale.

Scale design utilizes a self-centering floating ball and cup load cell mounting arrangement. Adjustable bumper bolts are provided to restrict lateral travel and prevent structural damage. Tie down studs and eyebolts are provided for shipping and/or moving the scale. The nuts on these studs can be loosened and left in place when installing the scale. If adjusted properly the nuts will restrict vertical platform travel in the event of side impact. This saves on down time and protects your investment.

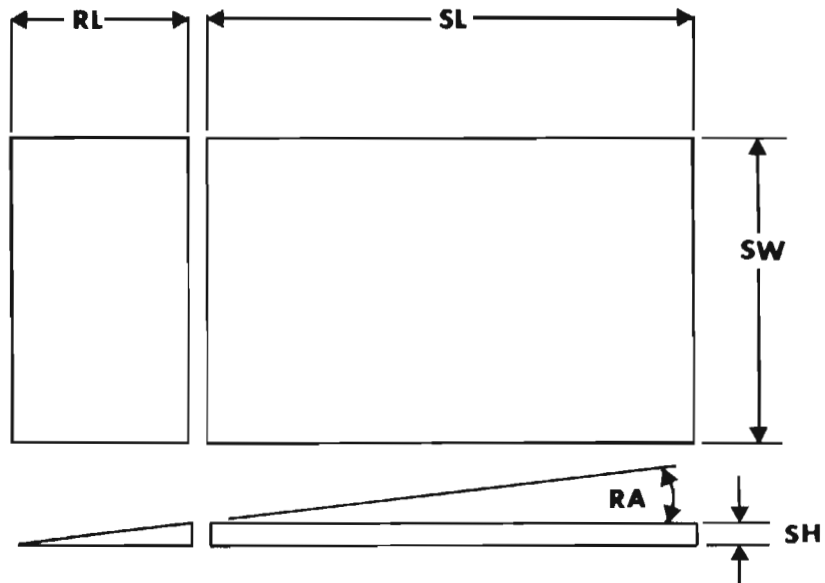
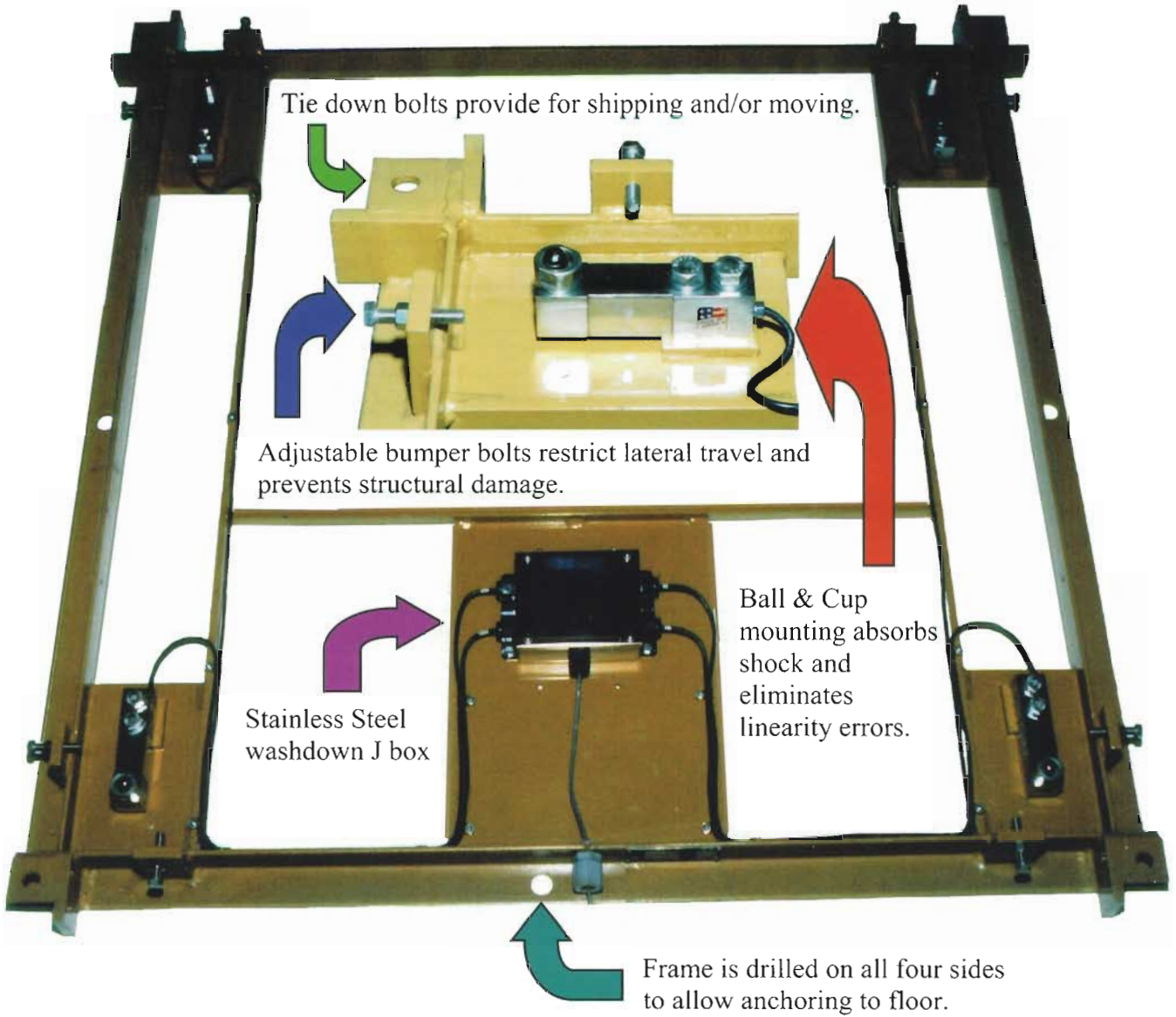


Industrial applications imply harsh surroundings and Loadmaster recognizes this. The series "LP" is designed for industrial environments with sealed load cell and a wash down Junction box as standard. Optional stainless steel load cells or hermetically sealed load cells. The junction box is built in the deck on 2000 lbs. to 10000 lbs. models and remote on the 20000 lbs. to 30000 lbs. models. Optional, can be remotely located on the lower capacity models if specified when ordering.

Access to all load cells and wiring is as simple as removing four nuts and lifting platform. No special tools or complicated disassembly involved.

Accuracy will be set forth in Handbook 44, Class III L. (NTEP approved Class III/IIIL)

All Loadmaster products are warranted against manufacturing defects for a period of one year.



Refer to next page for specifications

Refer to drawing on previous page.

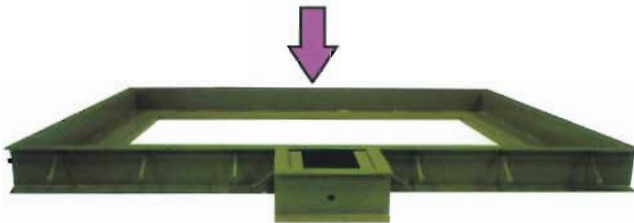
Part #	Capacity	Load cell	SH	SW	SL	Shipping Weight				
						Scale	Ramp	RL	RA	
135										
-3201-	2,000#	1,000#	3-3/4"	24"	24"	290#	190#	30"	7.18 Deg	
-3203-				36"	36"	390#	390#			
-3205-				48"	48"	600#	340#	30"	7.18 Deg	
-3501-	5,000#	2,500#	3 3/4"	36"	36"	390#	260#			
-3503-				48"	48"	600#	340#			
-4101-	10,000#	4,000#	3-3/4"	48"	48"	630#	560#	30"	7.18 Deg	
-4103-				60"	60"	890#	650#			
-4105-				60"	84"	1120#	650#			
-4106-				72"	72"	1190#	770#			
-4108-				72"	96"	1630#	770#			
-4201-	20,000#	10,000#	5-1/4	48"	48"	750#	560#	48"	6.27 Deg	
-4203-				60"	60"	1030#	650#			
-4206-				72"	72"	1500#	770#			
-4208-				72"	96"	1950#	770#			
-4301-	30,000#	10,000#	6-1/4	60"	60"	1388#	528#	60"	5.97 Deg	
-4304-				72"	72"	1806#	650#			
-4306-				72"	96"	2293#	650#			
-4307-				96"	120"	2900#	844#			

- 9 Painted Mild Steel
- 1 Stainless Steel
- 2 Hot Dip Galvanized

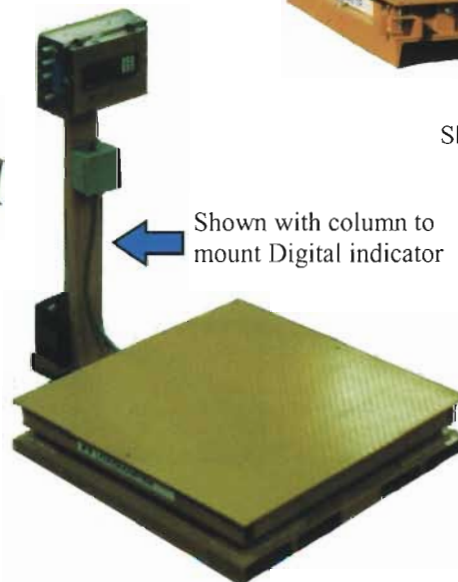
The above list shows some of our most popular sizes and capacities.
Custom sizes are available in most cases at no extra charge.

Part # example: 135-3503-1 is a 5000 lb. Low Profile Scale, 48" x 48" deck, Stainless Steel const.

Custom Built Pit Frames with Nelson Studs to provide strong bond with concrete pit walls

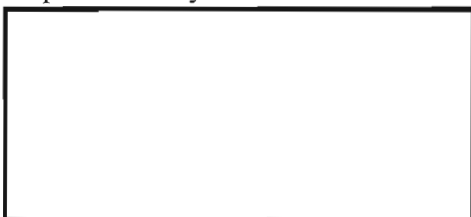


Shown with Fork lift channels



COC
91-093A2

Represented by:





LOADMASTER

SCALE MFG.

STATEMENT OF WARRANTY

LOADMASTER warrants to the original purchaser that any part of a LOADMASTER product, which in LOADMASTER'S judgement, is defective in material or workmanship will be repaired or replaced. This covers parts for a period of one (1) year and labor for ninety (90) days from date of shipment. This warranty does not apply to:

1. Any equipment which is not installed in accordance with LOADMASTER specifications and/or recommendations.
2. Any routine maintenance such as lubrication or periodic adjustments and calibration.
3. Any equipment damaged by abuse Acts of God, including (but not limited to) lightning, flood, earthquakes, hurricanes, etc.



LOADMASTER

SCALE MFG.

PAGE 2

MODEL # _____ SERIAL # _____

DESCRIPTION _____' X _____', _____

SHIP DATE _____ JOB# _____

CUSTOMER NAME _____

ADDRESS _____

CITY _____ STATE _____ ZIP _____

I. INDICATOR MODEL # _____ SERIAL # _____

II. PRINTER MODEL # _____ SERIAL # _____

III. MISC. ACCESSORIES _____

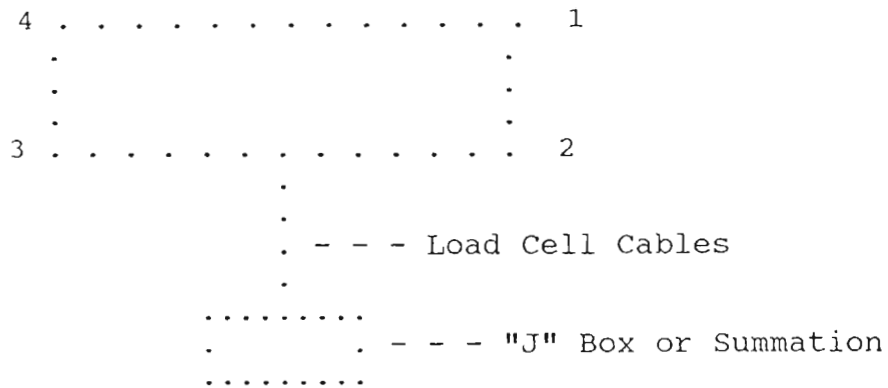
IV. LOAD CELL MODEL # _____ QTY. _____

SERIAL # _____

V. BILL OF MATERIALS: (Attach copy of packing list)

INSTALLATION OF LOADMASTER
LOW PROFILE INDUSTRIAL SCALES

1. After unpacking scale from the shipping crate, set the scale in the area that it is going to be used.
2. Loadmaster 20,000# capacity and under Low Profiles will require the following work before installation:
 - A) The ball cups and balls have been removed to prevent damage to load cells in shipping. The ball cups and balls will need to be installed.
 - B) After deck is set in place, four (4) 1/2" nuts will need to be installed on the tie-down bolts. Use extreme caution. They cannot be any tighter than finger tight to avoid possible damage to load cells.
3. The floor in this area should be level. If the scale shows signs of tippage, (one corner not making contact with the floor) the scale will need to be shimmed. Using a shim 12" x 12" x the thickness needed, place under the corner.
4. After the scale has been shimmed, loosen the four tie-down bolts. (one per corner)
5. Re-check the scale for tippage. Re-shim if needed.
6. Install the scale's main cable connector in the back of the digital.
7. Plug the digital into an isolated 110 VAC power line.
8. Your LOADMASTER scale has been factory sealed and should require no field adjustments. (If digital is bought from Loadmaster only.)
9. If your scale requires field calibration, we have made this simple through our summation box located outside the platform. (inside on non-hostile) Inside the box, you will find a board numbered 1-4 for individual corner adjustment. Follow these four steps for a simple calibration.



Note: Installed in deck on Non-Hostile and Load-Pro Models

- A) Place any known weight not exceeding the sectional capacity or less than 500# one corner at a time recording the weight displayed on the digital.
- B) After all four corners have been recorded, you adjust all corners to the lowest reading.

Example 1) Corners (1) 1000
 (2) 1001
 (3) 1000
 (4) 1002

Adjust corners 2 and 4 to read the same as 1 and 3.

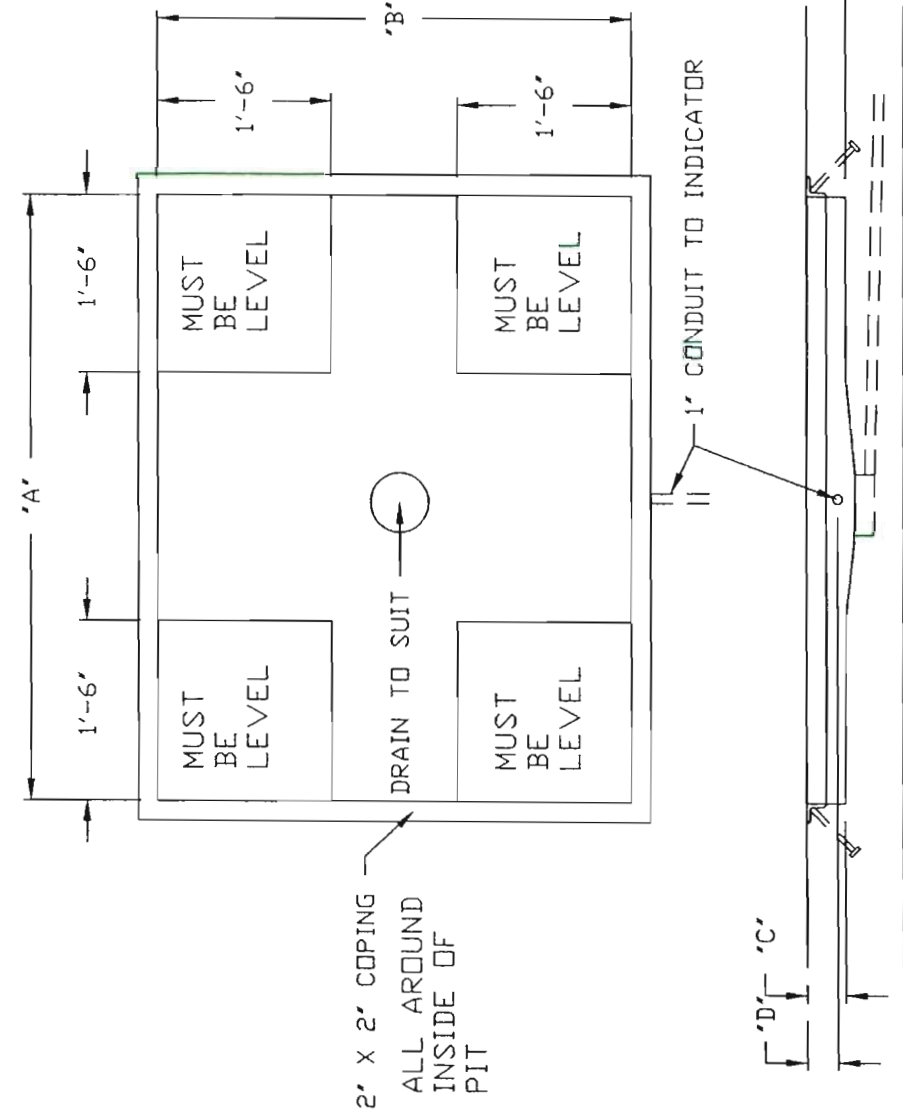
Example 2) Corners (1) 995
 (2) 999
 (3) 999
 (4) 1000

Adjust corners 2, 3, 4 to read the same as 1.

- C) After three corners are adjusted to read the same, place the weight in the center of the scale.
 - D) Refer to the Digital Owners Manual as to the location of the span pots. Adjust the overall calibration of the scale.
- 10) The scale is ready for use.
- 11) If the scale needs to be moved in the future, tighten tie down bolts (finger tight only) before attempting to move. Install lifting rings that are supplied with scale. Disconnect or secure digital. Refer to Step 3.

NOTES:

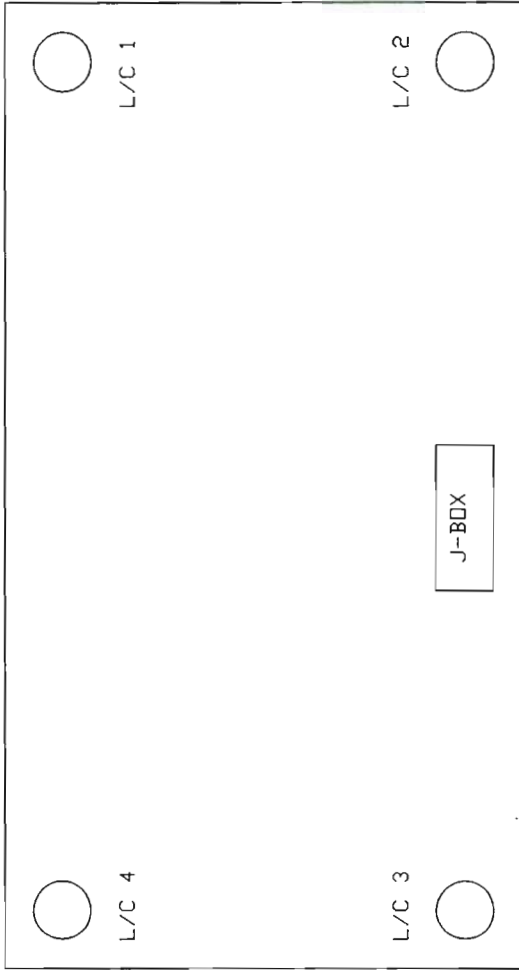
- 1) PIT MUST BE KEPT DRY. (FREE FROM STANDING OR RUNNING WATER)
- 2) CORNERS OF THE PIT MUST BE SMOOTH LEVEL AND TRUE TO PLANE.
- 3) PIT REINFORCEMENT IS THE JOBSITE CONTRACTORS RESPONSIBILITY.
- 4) SCALE FRAME TO BE DRILLED TO USE 1/2" ANCHOR BOLTS ON EA. SIDE OF THE SCALE. DRILL AND SET AT TIME OF INSTALLATION.
- 5) TOP OF PIT WALL TO BE LEVEL AND TRUE TO PLANE.
- 6) THE SCALE MAY NEED TO BE FIELD SHIMMED TO MATCH PIT USE MIN 18" SQ. SHIMS UNDER EA. CORNER.
- 7) UNLESS SPECIFIED THE SCALE WILL BE SUPPLIED WITH RAMP CLIPS ON THE FRAME. THEY MUST BE REMOVED FOR INSTALLATION OR PIT MUST BE 1" LARGER THAN SHOWN.
- 8) ON 40,000# SCALES THE CORNERS OF THE PIT MUST BE LEVEL 24" BOTH DIRECTIONS
- 9) IF DECK SIZE IS 96" LONG OR LONGER MAKE PIT DEPTH 6" AND SHIM TO HEIGHT



'A' = LONGEST SIDE OF SCALE +1"
 'B' = SHORTEST SIDE OF SCALE +1"
 'C' = 4" ON 1000-10000# SCALES SEE NOTE
 'C' = 6" ON 20,000-30,000# SCALES
 'C' = 8" ON 40,000# SCALES
 'C' = 7" ON 30,000# SCALES WITH
 A DECK SIZE OF 10' OR LARGER
 'D' = C - 1" ON 2-20,000# SCALES
 'D' = C - 1 1/2" ON 30-40,000# SCALES

LOADMASTER
 SCALE AND ELECTRONICS
 4500 WILSON ROAD
 FINDLAY OHIO 45840
 (419) 438-1778

TITLE: LP GENERIC PIT
 DATE: 6-2-92 DRN BY:MH
 DWG NO: 135-9999-9



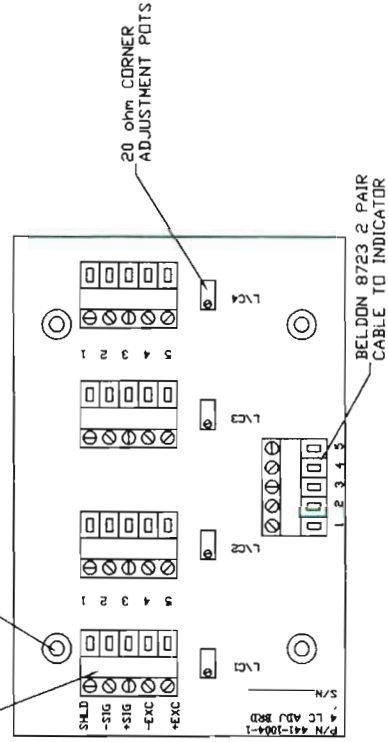
LOAD CELL SPECIFICATIONS

10K OR 5K CAPACITY
 EXCITATION VOLTAGE 20VDC MAX
 RATED OUTPUT 3 mv/v +/- .25%
 SAFE OVERLOAD 150%

WIRING

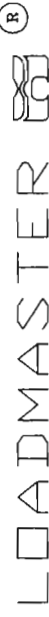
+EXC. RED
 -EXC. BLACK
 +SIG. GREEN
 -SIG WHITE

LOAD CELL CONNECTIONS



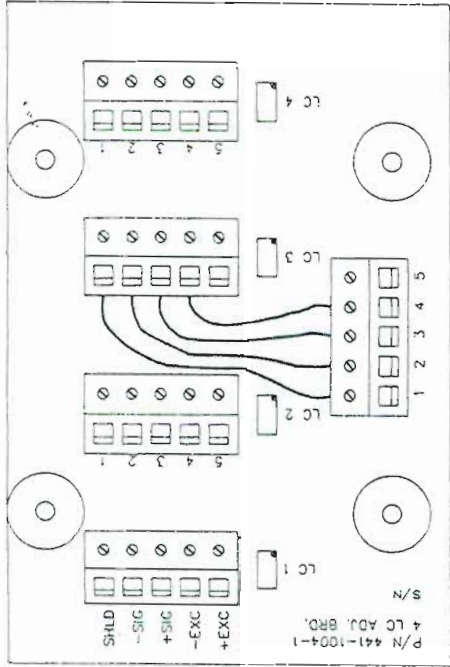
P/N 343-2014-1

THIS IS THE WIRING FOR ALL LOADMASTER SCALES
 SOLD WITH LANTECH STRETCH WRAPPERS.

LOADMASTER 

SCALE AND ELECTRONICS
 HOLTGREYVEN SCALE AND ELECTRONICS CORP.
 420 E LINCOLN ST.
 FINDLAY OHIO 45840
 (419) 422-4779
<http://www.loadmasterscale.com>

TITLE: WIRING DIAGRAM FOR SQ. SHEAR BEAMS
 DATE: 2-10-95 DRAWING NO: WIRE MM
 SCALE: NONE DRAWN BY: MARK HOLTGREYVEN



HOSTILE LOW PROFILE INDUSTRIAL
USE REVERSE SSB L/C

GRN +EXC
BLK -EXC
WHT +SIG
RED -SIG
ORG OR BARE SHLD

NON-HOSTILE LOW PROFILE INDUSTRIAL
SENSORTRONICS L/C

RED	+EXC	GRN	+EXC
BLK	-EXC	BLK	-EXC
GRN	+SIG	WHT	+SIG
WHT	-SIG	RED	-SIG
BARE	SHLD	BARE	SHLD

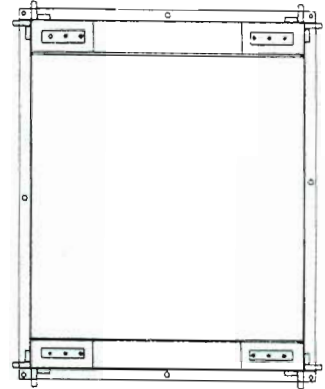
NOTE: SENSORTRONICS LC's ARE MOUNTED
UPSIDE DOWN SO THE SIGNAL WIRES ARE REVERSED

L/C 4

L/C 1

L/C 3

L/C 2



NOTE

ON NON-HOSTILE SCALE MAIN CABLE EXITS FRAME THIS SIDE
ON HOSTILE SCALE L/C CABLE TO JUNCTION BOX EXITS FRAME THIS SIDE

LOADMASTER

SCALE AND ELECTRONICS
HOLLISTON SCALE AND ELECTRONICS CORP.
120 S. LAURENCE ST.
MILWAUKEE, WI 53240
(414) 422-1778

TITLE: TITLE DRAWING FOR L/P INDUSTRIAL'S	
DATE: DATE	DRN BY: DAVE GUINN
SCALE: N/A	DWG NO.: DWG#
APP. BY:	REV. DATE:
JOB #	

LOADMASTER® LOW PROFILES

Replacement parts list

Ball Cup 1 1/8" Spherical



**Spherical ball cup used in
Most All decks of Low Profiles
1K through 30K
P/n 412-3008-1**

Ball Cup, 1/2" Threaded



**Threaded ball cup used with
Square shear beams 1k-5k SE
Standard for Low profiles 1k-10k
P/n 412-3016-0**

Bearing Ball, SS 5/8"



**Stainless steel ball bearing
standard in all Low Profiles
1k-30k capacities
P/n 575-1001-0**



**4k shear beam load cell
Used in most 10k low profiles
P/n 124-3405-0**

PN 343-2014-1



Load Cell Trim Board, Parallel four load cell

**Summation Card used in all
Low Profile Scales
P/n 343-2014-1**

LOADMASTER® LOW PROFILES

Replacement parts list

Ball Cup , 1 5/8" with 3/4" Threads



Ball Cup 3/4" Threaded
Used in most 20K decks
And some 10K decks
P/n 412-3017-0



10K Shear beam load cell
Used in 20K Scales
P/n 124-4105-0



5KSE shear beam load cell
Used in some large platform size
10K scales
P/n 124-3503-0



Spherical Ball cup 1/4" tall
Used in Special 3" tall scale
P/n 412-3004-1



J-Box used in scales
1k-10k with in deck adjustment
P/n 241-1041-2 with board
P/n 234-1006-1 box only



"a preferred name in load cell technology"

Model 30310



Rectangular Shear Beam Load Cell

FEATURES:

- Model 30310 threaded hole
- Model 30210 through hole
- 250 to 20K pounds capacities
- Complete environmental protection
- Stainless Steel versions available
- NTEP certified versions available for class III/ III L 5000 divisions
- Factory Mutual (F.M.) Approved †

NTEP C.O.C. #87-058A6

DESCRIPTION:

A versatile Load Cell designed for multiple use in low profile and platform scales, and in tank, bin, and hopper weighing systems. The high alloy steel construction ensures durability and precision performance. The cell is environmentally protected with waterproof seal and is nickel/chrome plated to assure resistance against corrosion. Mounting plates are also available (see accessories).

PERFORMANCE SPECIFICATIONS

Standard Capacities (lbs.):	*250, *500, 1K, 2K, 2.5K, 3K, 4K, 5K, 5KLE, 10K, 15K, 20K
Excitation Voltage:	10VDC - Maximum 15VDC
Rated Output:	3.0 mv/v + .25%
Non-Linearity:	< 0.03% FSO (Full Scale Output)
Hysteresis:	< 0.02% FSO
Non-Repeatability:	< 0.01% FSO
Zero Balance:	±1.0% FSO
Bridge Resistance:	350 ± 3.5 ohms
Safe Overload:	150% of Rated Capacity
Temperature:	
Compensated Range:	0 - 150 deg. F
Effect on Output:	< 0.0008% FSO/deg. F
Effect on Zero:	< 0.0011% FSO/deg. F
Finish:	Electroless Nickel/Chrome Plated



APPROVED

* Bending Beam

Model 30310

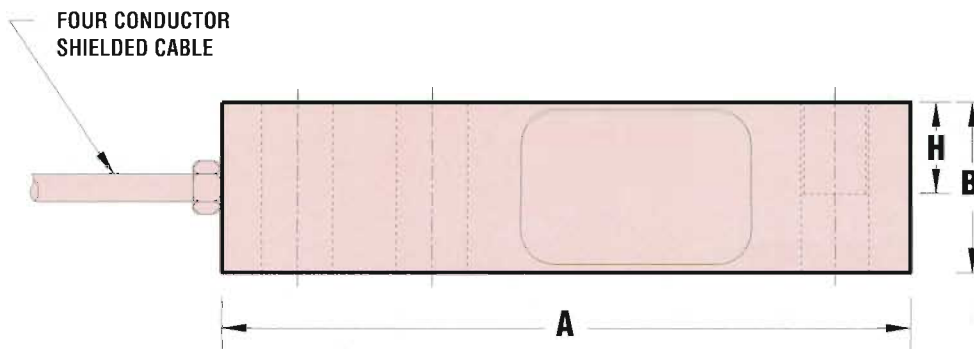
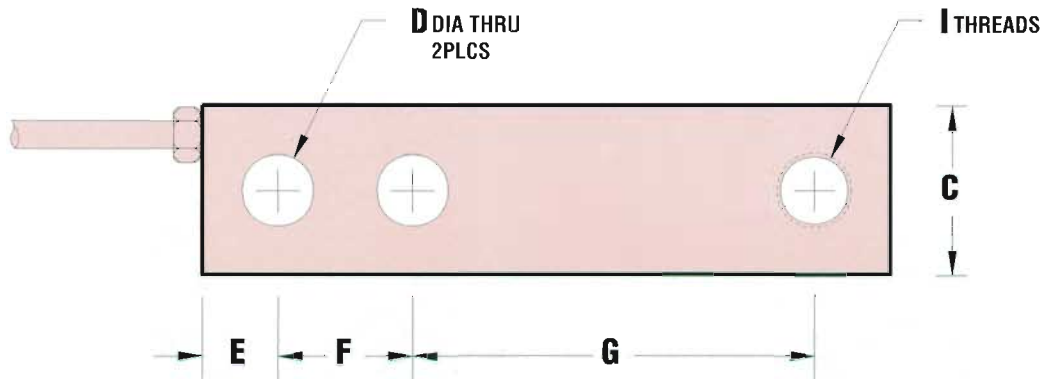


CAPACITY LBS.	PART NO.	A	B	C	D	E	F	G	H	I THREADS
250 - 5K	30310 - XX	5.12	1.25	1.25	.53	.60	1.00	3.00	.60	1/2-20 UNF - 2B
5KLE - 10K	30310 - XX	6.75	1.50	1.50	.78	.75	1.50	3.75	.75	3/4-16 UNF - 2B
15K - 20K	30310 - XX	8.75	2.00	2.00	1.03	1.00	2.00	4.75	1.00	1-14 UNF - 2B

ELECTRICAL TERMINATION

INPUT OUTPUT SHIELD
 RED (+) GREEN (+)
 BLACK (-) WHITE (-)

COMPRESSION POSITIVE



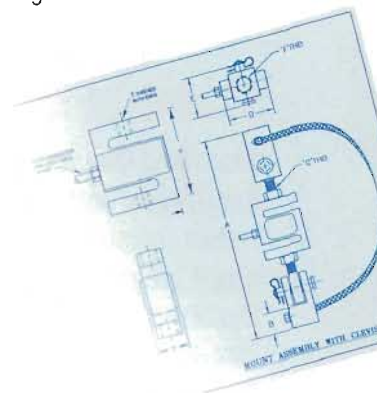
† Factory Mutual Systems approved as intrinsically safe when installed per F.M. approved installation drawing. Contact ARTECH sales department for details.

Represented by:

HOLTGREVEN
 Scale & Electronics Corp.
 420 East Lincoln St.
 Findlay, Ohio 45840
 419-422-4779
 800-637-3326



1966 Keats Drive, Riverside, CA 92501



ORDER INFORMATION

- ◆ ARTECH is dedicated to maintaining adequate inventories of its Load Cells to provide the best service in the industry.
- ◆ Order by the model number and indicate the capacity required.
- ◆ Custom services such as matched load cell outputs, special threading, and custom calibrations are available on an optional basis at an extra cost.

Let us know what you need... we listen!

QUALITY • PERFORMANCE • SERVICE

909-276-3331 • 800-654-8181 • Fax: 909-276-4556

Email: artechind@msn.com • www.artech-loadcell.com

"a preferred name in load cell technology"

Model SS30610



Shear Beam Load Cell

FEATURES:

- 1K to 40K pounds capacities
- Stainless steel construction
- Hermetically sealed
- Exceed NIST H-44 requirements
- Low cost
- Interchangeable with SSB
- Factory Mutual (F.M.) Approved †

DESCRIPTION:

Model SS30610 constructed of stainless steel, and hermetically sealed. The SS30610 load cell is an excellent choice for the toughest industrial environment. SS30610 is ideal for material processing, food processing and platform scales. Other capacities are available upon request.

PERFORMANCE SPECIFICATIONS

Standard Capacities (lbs.):	1K, 2K, 4K, 5K, 10K, 40K
Excitation Voltage:	15VDC
Rated Output:	2.0 mv/v \pm .1% mv/v
Non-Linearity:	< 0.03% FSO (Full Scale Output)
Hysteresis:	< 0.03% FSO
Non-Repeatability:	< 0.02% FSO
Zero Balance:	\pm 1.0% FSO
Bridge Resistance:	350 \pm 1 ohms
Safe Overload:	150% of Rated Capacity
Temperature:	
Compensated Range:	0 - 150 deg. F
Effect on Output:	< 0.0008% FSO/deg. F
Effect on Zero:	< 0.0011% FSO/deg. F
Material:	Stainless Steel



APPROVED

Model 5530610

CAPACITY LBS.	A	B	C	D	E	F	G	H	I	J	K
1K - 5K	8.00	1.44	1.88	.51	.75	2.50	3.87	.68	1.18	.47	4.00
10K	9.25	1.88	2.75	.88	.80	2.63	4.88	1.00	1.63	.62	4.62
40K	12.50	2.75	3.75	1.31	1.25	3.50	6.25	1.50	1.88	.75	6.50

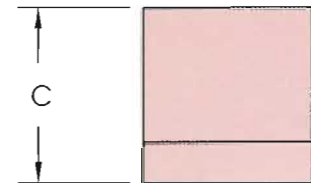
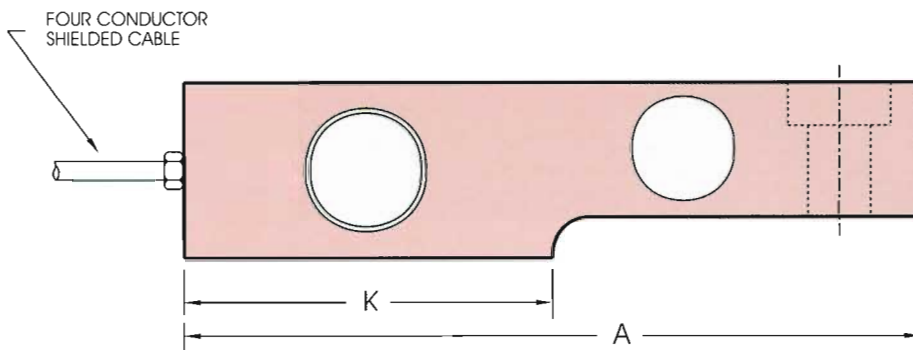
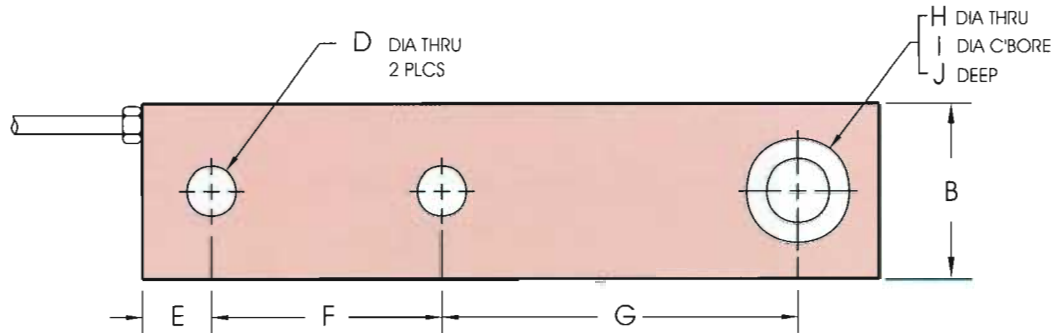
ELECTRICAL TERMINATION

INPUT OUTPUT SHIELD

GREEN (+) WHITE (+)

BLACK (-) RED (-)

COMPRESSION POSITIVE



† Factory Mutual Systems approved as intrinsically safe when installed per F.M. approved installation drawing. Contact ARTECH sales department for details.

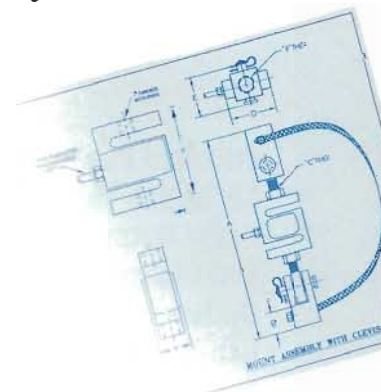
Represented by:

HOLTGREVEN
Scale & Electronics Corp.
420 East Lincoln St.
Findlay, Ohio 45840
419-422-4779

800-637-3326



1966 Keats Drive, Riverside, CA 92501



ORDER INFORMATION

- ◆ **ARTECH** is dedicated to maintaining adequate inventories of its Load Cells to provide the best service in the industry.
- ◆ Order by the model number and indicate the capacity required.
- ◆ Custom services such as matched load cell outputs, special threading, and custom calibrations are available on an optional basis at an extra cost.

Let us know what you need... we listen!

QUALITY • PERFORMANCE • SERVICE

• 909-276-3331 • 800-654-8181 • Fax: 909-276-4556 •

Email: artechind@msn.com • www.artech-loadcell.com



LOADMASTER

SCALE MFG.

EFFECTIVE 1/1/95

STANDARD TERMS AND CONDITIONS OF SALE

- CONTRACT.** ANY ACCEPTANCE BY LOADMASTER SCALE MANUFACTURING. (HEREAFTER REFERRED TO AS THE COMPANY) OF THE BUYER'S ORDER IS EXPRESSLY MADE CONDITIONAL ON THE BUYER'S ASSENT TO ANY ADDITIONAL OR DIFFERENT TERMS CONTAINED HEREIN. Quotations issued by the Company's distributors and agents shall not be construed as offers to sell and be binding upon Buyer's acceptance thereof unless expressly confirmed in writing by the Company's Headquarters at Findlay, Ohio. All orders are received subject to acceptance by the Company.
- PRICES.** (a) The prices shown in published price lists and other published literature issued by the Company are not offers to sell and are subject to change without notice. (b) All prices are f.o.b. place of origin.
- TAXES.** The Company's prices do not include any applicable sales, use, excise, or similar taxes; any such taxes which the Company may not or hereafter be required to pay or collect shall be billable to the Buyer as a separate item unless the Buyer has furnished the Company with a tax exemption certificate acceptable to the taxing authorities.
- INSTALLATION.** The Company's prices for equipment unless otherwise specified do not include an allowance for installation and/or final on-site adjustment. Any such service performed by the Company shall be billable to the Buyer as a separate item at the Company's then prevailing rates for the local area concerned.
- ADDITIONAL MATERIALS AND EQUIPMENT.** The Company's prices for equipment do not include planking, concrete, steel plate or other platform coping material, weighbridges, or other structural steel, hoppers, tanks, conveyors, conveyor sections, other attachments or accessories, wiring to the scale, or any material or equipment other than the scale itself, unless the Company's acceptance specifically so states.
- PITS AND FOUNDATIONS.** Unless the acceptance by the Company expressly includes the furnishing of scale pits or scale foundations, the Company's responsibility for such pits and foundations is limited to supplying correct drawing. Such drawings illustrate and describe pits or foundations for normal site conditions. The Company will be responsible only for prints officially issued; CERTIFIED as approved for construction for the specific order.
- PAYMENT.** Unless otherwise expressly stated in the Company's acceptance, payment terms are cash net 30 days from date of invoice. Amounts past due are subject to a service charge of 1 1/2% per month or fraction thereof. The Company reserves the right to restrict the terms of payment or to require payment prior to the time of shipment if, in the Company's opinion, circumstances do not warrant shipment under the terms originally specified in the contract documents.
- SECURITY INTEREST.** The Company shall retain a security interest in the equipment furnished by it under the contract until the full purchase price has been paid. No equipment furnished by the Company shall become a fixture by reason of being attached to real estate. Buyer's failure to pay any amounts when due shall give the Company the right to possession and removal of the equipment. If the Company retakes the equipment, it may retain all sums theretofore paid by Buyer hereunder as being for reasonable use of the equipment.
- DELIVERY.** Delivery dates indicated in the contract documents are approximate and are based on prompt receipt of all necessary information regarding the equipment covered by the contract. The Company will use its best efforts to meet the indicated delivery dates, but cannot be held responsible for its failure to do so due to fire, war, civil commotion, strikes, failure of transportation, any Act of God, or other causes beyond its control. In the event of any delay in delivery caused by the Buyer, the Company will store and handle all items ordered at the Buyer's risk and will invoice the Buyer for the unpaid portion of the contract price, on or after the date on which the equipment is ready for delivery. This amount will become due and payable in full within 30 days from invoice date. A monthly storage and extra handling charge of 1 1/2% per month, or any fraction thereof, of the contract price covering the stored equipment shall be billable and payable as a separate item.
- SHIPPING.** Unless otherwise provided in the contract, the Company will select the method of transportation and routing for equipment sold f.o.b. place of origin in which case shipping damage, both visual and concealed, is the responsibility of the Buyer. Shipment may be made freight collect.
- CHANGES.** Buyer may with the express written consent of the Company make changes in the specifications for equipment or work covered by the contract. In such event the contract price and delivery dates shall be equitably adjusted. The Company shall be entitled to payment for reasonable costs and expenses incurred by it for work and materials rendered unnecessary as a result of such changes and for work and material required to effect said changes, plus the Company's usual profit thereon.
- CANCELLATION.** Equipment or work which remains to be furnished under the contract may be cancelled by the Buyer only with the express written consent of the Company. In the event of such cancellation, the Company shall be entitled to payment for the reasonable costs and expense incurred by it in connection with the equipment of work so cancelled, plus an amount determined by applying the Company's usual rate of profit for similar items to such costs and expenses. The minimum cancellation charge will be 20% of the contract price.

- STATEMENT OF LIMITED WARRANTY.** The Company warrants its products to be free from defects in materials and workmanship for a period of twelve months from date of shipment to an authorized Company distributor or agent or to the original user, whichever period is shorter. This limited warranty is subject to the terms and conditions as follows:

The equipment covered by this warranty is limited exclusively to products manufactured or supplied by the Company and is valid for the original user only. This warranty is non-transferable.

Should any defects in material or workmanship be found, the Company will repair, replace or otherwise correct such defects (at its option) at no charge to the equipment owner during normal week day working hours (8:00 a.m. - 5:00 p.m.) for the first sixty (60) days. For the remainder of the warranty period the Company will provide parts and technician labor at the equipment site during normal week day working hours. The equipment owner will be invoiced for technician travel time and expenses. All technician labor will be provided by the Company, authorized distributor or agent personnel. All travel to the equipment site is based on mileage from the closest authorized distributor or dealer location. Calibration and normal maintenance are not covered under this warranty.

Any parts or equipment to be repaired at the factory or replaced must be properly packed to prevent shipping damage and shipped prepaid to Findlay, Ohio. Repaired or replaced parts or equipment will be shipped prepaid back to the installation site or authorized distributor location.

Remedies under this limited warranty shall not be available to the equipment owner if any of the following has occurred:

- Equipment was improperly installed or operated above rated load capacity according to the Company's drawings, specifications or rating information contained on equipment data plates.
- Equipment has been repaired or modified without the Company's authorization which in the Company's judgement has affected the performance or reliability of the product.
- Equipment has been subject to misuse or abuse, neglect, accident, damage by fire, lightning, water or other Acts of God.

The company shall not be liable for consequential damages or losses of any nature resulting from the installation, use of or performance of its products including but not limited to loss of profit, delays or expenses.

This limited warranty shall apply only in the contiguous 48 states of the U.S.A. and constitutes the sole warranty offered by the Company. No other warranties expressed or implied, shall be in effect including any warranty of merchantability or fitness for a particular application.

Claims for equipment damaged in transit must be referred to the freight carrier. Visible damage should be reported immediately. Concealed damage should be reported as soon as it is discovered or in any case, within fifteen (15) days of receipt of shipment, in accordance with freight carrier regulations.

GENERAL: The foregoing warranties are further subject to the following general conditions:

- If the Buyer requests the performance of warranty work provided for under the foregoing warranties during other than normal Company work periods, the Buyer shall be required to pay for all premium time.
- If the Buyer requests the performance of warranty work provided for under the foregoing warranties outside of the continental United States, the Buyer shall be required to pay for the travel time, living and travel expenses of any Company personnel required to perform such warranty work.

THESE WARRANTIES ARE IN LIEU OF AND EXCLUDE ALL OTHER EXPRESS OR IMPLIED WARRANTIES, INCLUDING WITHOUT LIMITATIONS, ANY IMPLIED WARRANTY OR MERCHANTABILITY OR FITNESS FOR A PARTICULAR PURPOSE. IN NO EVENT SHALL THE COMPANY BE LIABLE FOR SPECIAL OR CONSEQUENTIAL DAMAGES, OR FOR ANY OTHER LOSS, DAMAGE OR EXPENSE OF ANY KIND, INCLUDING LOSS OF PROFITS, ARISING IN CONNECTION WITH THIS AGREEMENT OR WITH THE USE OR INABILITY OF USE THE SERVICES FURNISHED UNDER THIS AGREEMENT.

- INSURANCE.** The Company is insured at all locations where it undertakes business operations with the type of coverage and limits or liability thereon as follows: Workmen's Compensation - statutory; Employer's liability - \$500,000 per accident; Comprehensive Liability (Personal injury and Property Damage Liability, Automobile and other than Automobile) - 1,000,000 single limit per occurrence. The Company will furnish its STANDARD insurance certificate incorporating above coverage upon request.
- SAFETY.** It is the responsibility of the User to exercise adequate safety precautions in the use of the Company's products. The Company will be responsible for damages or injuries incurred through User misuse or negligence.
- PERMITS, REGULATORY LAWS AND OR STANDARDS.** The buyer shall at its own expense apply for and obtain any permits and inspections required for the installation and/or use of the equipment furnished under the contract. The Company makes no promise or representation that its product or services will conform to any federal, state or local laws, ordinances, regulations, codes or standards, except as particularly specified and agreed upon for compliance in writing as a part of the contract between Buyer and the Company or as stated in specific literature.
- CONTRAVENING LAW.** Should any term or provision contained in the contract contravene or be invalid under applicable law, the contract shall not fail by reason thereof but shall be construed in the same manner as if such term or provision had not appeared therein.
- DEFAULT.** Upon default and placing of this instrument with an attorney for collection or repossession of equipment, Buyer agrees to reimburse attorney fees incurred by the Company in connection therewith.