

# ***LOADMASTER AXLE SERIES***



## **GENERAL**

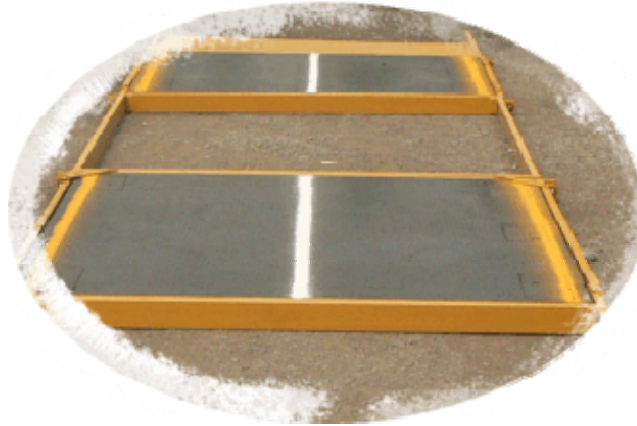
This scale system must be installed on a firm and level surface. Particular attention should be paid to the load bearing points at the end of each module. Note that if the area between the ends of the scale is too high it will cause weight errors by rocking the sub-frame. The same condition can be created if surface settling occurs, the center of the frame will not compress the surface at the same rate as the load bearing ends. This will create the same bind as the unlevelled surface described above.

## **INSTALLATION STEPS**

1. Site preparation. You should have a firm and level surface area that is at least one (1) foot wider and five (5) feet longer than the overall dimensions of the scale. For a temporary installation compressed stone is adequate. For any installation over 6 months it is recommended that concrete footers be poured below frost level.
2. Determine where your indicator will be installed and arrange the scale so the J-Box is located on the same side. Note that the J-Box is located under the access plate on one side of the deck plate. In the center of the length.
3. Set the first module. Lifting points are provided on the four corners of the scale frame.



4. If dead spaces are to be used these need to be placed as needed. They are designed for either stone fill for temporary use or to be filled with concrete for more permanent use. If filled with concrete a rebar pattern of 12" square of ½" rebar is recommended. If you plan on moving them after concrete is poured a heavy visqueen should be placed below them so they do not adhere to the surface. They also have lifting rings on the four corners if you would like to move them in the future.



5. After all modules and dead spaces are in place the scales can be ramped up to with stone or optional ramps can be installed.

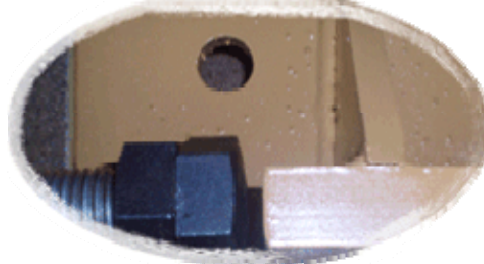




- Open up the access covers over the load cells. All four corners of the platform and remove the tie down bolts. It is recommended that the tie down bar be laid across the beams of the scale weighbridge. We also recommend that the bolt be placed back into the threaded hole to avoid dirt accumulation.



- If scale system is installed on a concrete foundation anchors should be installed through the provided anchor holes. One at each load cell access hole. Using a  $\frac{3}{4}$ " x 4" concrete anchor.

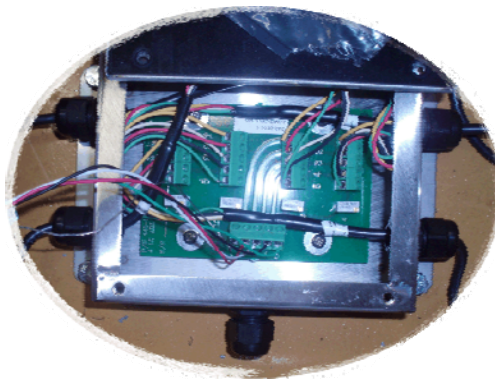


- Make sure there is load on all load cells of the scale. No rocking from corner to corner. If there is rocking shim under the scale frame.

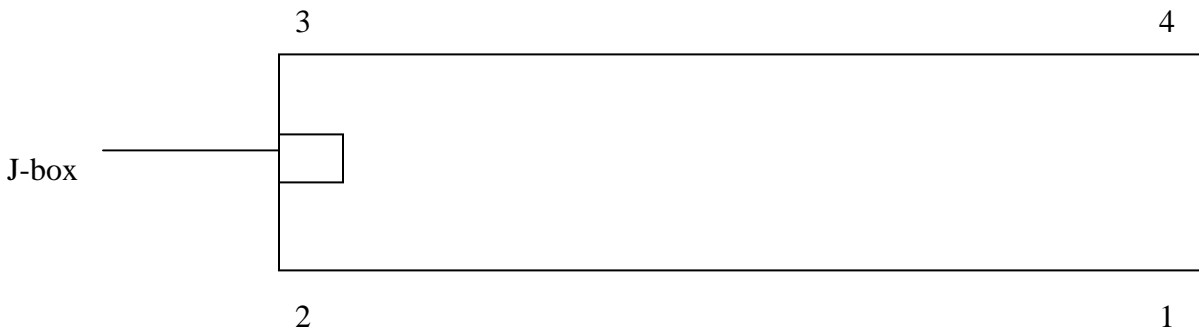
9. The load cell assembly is designed to rock in place. The cell should be seated in the upper and lower receiver plates.



10. Wiring the load cell are all wired into the junction box located under the access plate in the center of one side of the platform.

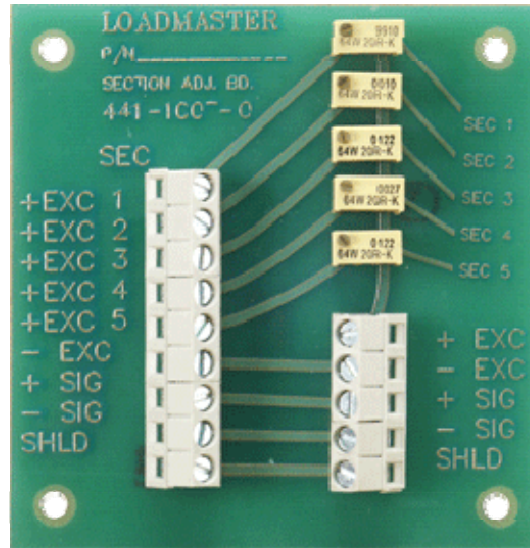


Corner numbering



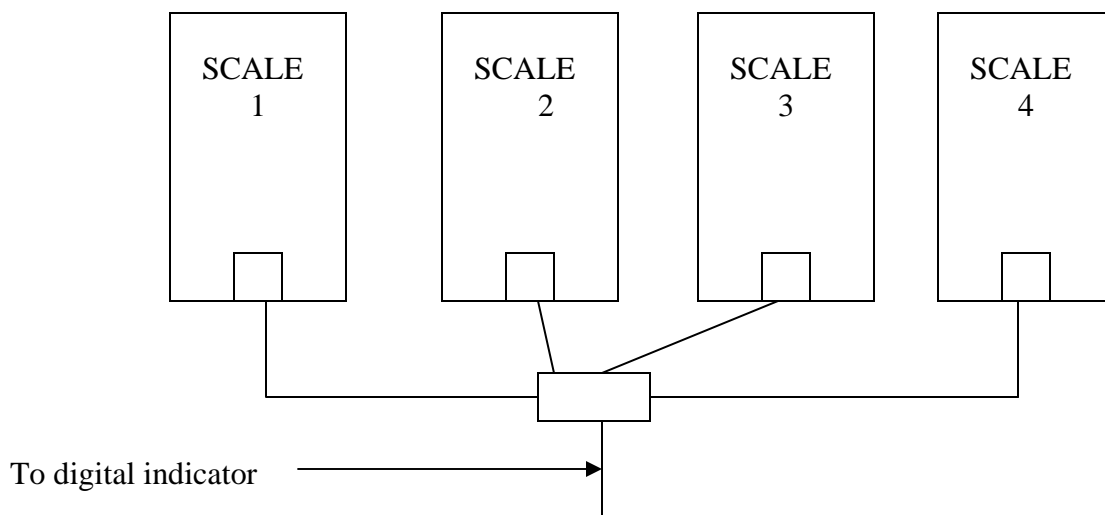
- + EXC = GREEN
- EXC = BLACK
- +SIG = WHITE
- SIG = RED
- SHIELD = BARE OR YELLOW

11. If more than one platform is to be wired into an indicator. An option board will be supplied similar to below.

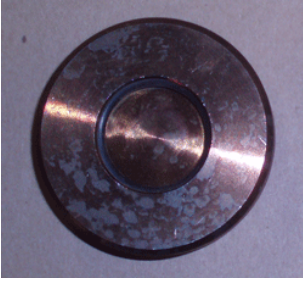


You will need to wire the platforms into this board for adjustment from platform to platform  
 The + Signals from all platforms will all wire into + Sig on the left  
 The - Signals from all platforms will all wire into - Sig on the left  
 The - Excitation from all platforms will all wire into - Exc on the left  
 The individual +Excitations will wire into + Exc 1-5 depending on the number of platforms used. The indicator cable will wire into the connector on the right.

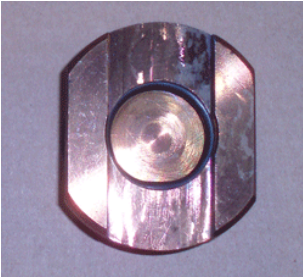
The potentiometers will be used to adjust the scale platforms to each other. Just like adjusting individual sections of a truck scale.



Replacement parts.



Upper receiver cup P/n 412-3037-0 one per load cell assembly.



Lower receiver cup P/n 412-3038-0 one per load cell assembly.



“O” Rings two sizes each receiver cup uses one of each  
P/n 412-3041-0 1/8” x 1 1/8” x 1 3/8”  
P/n 412-3040-0 1/8” x 1 7/8” x 2 1/8”



Stainless Steel load cell 22.5 metric tons capacity each.  
Four per scale. P/n 122-4598-1

PN 343-2014-1



Load Cell Trim Board, Parellel four load cell